

Joshua Methodist Church



love



grow



serve

Weekly Newsletter

Sept. 8, 2024



**Scripture:
1 Samuel 11-12
Psalm 51**

Order of Worship

10:30 Service

Call to Worship

Apostles Creed

Opening Songs

We Have Come
Awesome Is The Lord Most High
Jesus We Love You

Pastoral Prayer

Offering

Offertory Song

He Keeps Me Singing

Doxology

Children's Time

Sermon

Big Dave
1 Samuel 11 & 12
Psalm 51

Closing Song

All Hail King Jesus

Mission Statement / Benediction

We are committed Christian disciples,
loving God, growing in grace and serving others

love

grow

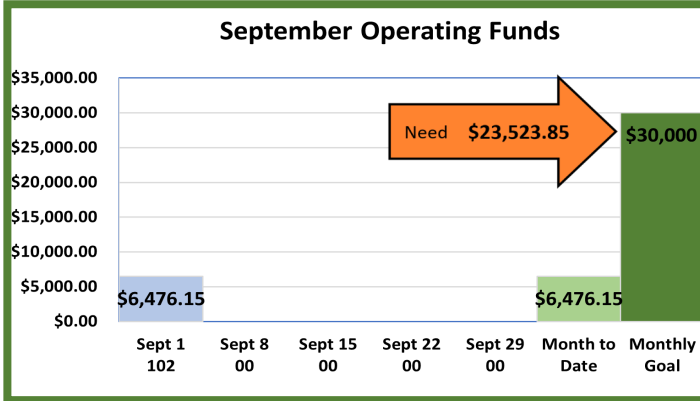
serve

Today, & This Week



Joshua Methodist Men

Methodist Men are meeting Sunday
after church in the gym.
Lunch is provided.



TAI CHI

MONDAY & WEDNESDAY
SEE YOU IN THE
JMC GYM AT 1PM



TCAFP utilizes Tai Chi's Sun style for its ability to improve relaxation, balance, mobility, and flexibility, and in addition, it reduces the risk of falls and targets adults 60 and older.

Each workshop series is offered for two hours per week (one hour twice a week) for 8 weeks.

The North Central Texas Area Agency on Aging will be offering this program at Joshua Methodist Church (Gym) on Mondays and Wednesdays starting July 8th thru September 11th from 1:00 pm-2:00 pm.

*****Last Week for Summer Session*****



Need a JMC logo shirt?
Come order one in the Church office.
S-XL \$10; 2XL-3XL \$13

love

grow

serve

This Week, cont'd

Wednesday Night Live

Join us Wednesday nights for
dinner and fellowship

September 11
Dinner is served at 6:00pm

**Chicken Stir Fry
Rice, Spring Rolls & Desserts**

Helping Hands Pantry

THANK
YOU

THANK
YOU

THANK
YOU

--CHURCH FAMILY--

For supporting
Helping Hands Pantry

Helping Hands Food Pantry

Fighting Hunger Together

[Donation Requests](#)



Jelly &
Ramen noodles

you can notate on
your donation
"Helping Hands"



Next Week



Grief Support Group

*Help and encouragement after
the death of a loved one*

Join our 13 week grief recovery program to find hope and
healing after the death of a loved one.
Register online at griefshare.org
Please order a workbook (\$20), no other costs.

This program will enable you to hear insight from grief recovery experts,
receive comfort and support and learn practical tips
for the journey of grief.

**Sundays 4:00-6:00pm,
September 15 - December 15**

Questions? please contact
Cheryl Pritchett 817-919-4191
griefshare.org



Bulgarian Presentation
JMC POTLUCK
Dinner

— AT 5:00 PM —

**SUNDAY,
SEPTEMBER 15, 2024**

JMC GYM



****Next
Saturday!***

**KAIROS
COOKIE BAKE**

Saturday, September 21
1pm to 4pm



Coming Soon

You're invited to our 71st Annual

Lord's ACRE

Joshua Methodist Church
114 Paula Drive, Joshua, TX 76058

Saturday, September 28th
9:00AM - 3:00PM

Free Admission!

Located in the Church Gym
For more information contact Lucy at 817-223-4926
joshuamethodist.church

**TICKETS
FOR LUNCH \$10**

**RAFFLE TICKETS
FOR A QUILT \$20**

**CAR SHOW
REGISTRATION \$20***
*register by Sept. 16, late fee - \$25

GLITTER GALLERY

•
BOOK NOOK

•
CRAFTS

•
BAKED GOODS

•
PANTRY ITEMS

•
CAR SHOW

•
SILENT AUCTION

•
LIVE AUCTION

JOSHUA METHODIST CHURCH
Benefits Missions for JMC

LORD'S ACRE CAR SHOW

- ◆ 28 September, 2024
- ◆ 114 Paula Drive
Joshua, TX 76058



Early Bird
Registration Fee
\$20

*Late, Day of \$25

**JUDGING BEGINS AT 11:00AM,
AWARDS AT 12**

★ Best in Show ★
★ People's Choice ★ Late Model ★
New Model ★ Best in Class

**LUNCH 11-1
LARGE AUCTION 12:30**

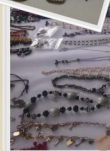
***Registration 9-10am
Car Show Starts
at 10:30am**

Lord's Acre Glitter Gallery



WE'RE COLLECTING GENTLY USED JEWELRY, NECKLACES, BRACELETS,
RINGS, BROOCHES, EARRINGS, WATCHES, HAIR CLASPS, BELTS, SCARVES
AND PURSES (MEN'S ITEMS, TOO)

DONATE TO THIS WORTHY CAUSE. [IT'S FUN AND MAYBE YOU'RE
CLEANING OUT AND DECLUTTERING - WE'LL TAKE YOUR ITEMS.
GLITTER GALLERY COLLECTION BOXES WILL BE ON THE TABLE
OUTSIDE THE CHURCH OFFICE AND ON THE COUNTER IN THE
FRIENDSHIP HALL.



WWW.JOSHUAMETHODIST.CHURCH

David & Bathsheba Word Search

B A T H S H E B A M O U R N I N G S B
Z V C H I L D R I N K N T A P K M E M
P A T R A V E L L E R T X T N E D R E
O L K U D E A D C H I L D H L W I V S
O I W L W C D M Y L W F H A J E S A S
R A H C P E A L L O X K S N O L P N E
M N K O L V T A R R Q U G L A A L T N
A T A L T E W H K G R N W N B M E S G
N M I C R T T A F E I F R A B B A H E
T K M C U R E Q J H I E Z U R O S T R
I W E O E J O S S U S F L O C K E O L
R S I V N U B A T T L E U H O I D S E
I F O F R O W C B B Q R U I N F R Q T
C T A E E Q X G M U A X C D K G Z U T
H R G S I N S B E A U T I F U L P R E
M N O O T A R R Y U B V T O F L W I R
A G V O V E P B N A A K R L X O Q A C
N F C N F L D C U D H O U S E R A H R
T H O U A R T T H E M A N V G D C U L

AMMON
ANGER
BATHSHEBA
BATTLE
BEAUTIFUL
CHILD
DAVID
DEAD CHILD
DISPLEASED
DRINK

ewe lamb
fasted
flock
hottest battle
house
jerusalem
joab
killed
letter
lord

messenger
mourning
nathan
overthrow
poorman
rabbah
rich man
roof
secretly
servants

sinner
tarry
thou art the man
traveller
uriah
valiant
wall
war
washing
wife

love

grow

serve

Daily Bible Reading Plan

September

- ☐ 1 Mark 4:1-9
- ☐ 2 Mark 4:10-20
- ☐ 3 Mark 4:21-34
- ☐ 4 Mark 6:1-13
- ☐ 5 Mark 7:1-13
- ☐ 6 Mark 7:14-23
- ☐ 7 1 Kings 3:1-15

- ☐ 8 1 Kings 3:16-28
- ☐ 9 Psalm 19
- ☐ 10 Psalm 49
- ☐ 11 Proverbs 15
- ☐ 12 Proverbs 16
- ☐ 13 Proverbs 17
- ☐ 14 Proverbs 18

- ☐ 15 Psalm 119:1-16
- ☐ 16 Psalm 119:17-32
- ☐ 17 Psalm 119:33-48
- ☐ 18 Psalm 119:49-64
- ☐ 19 Psalm 119:65-80
- ☐ 20 Psalm 119:81-96
- ☐ 21 Psalm 119:97-112

- ☐ 22 Psalm 119:113-128
- ☐ 23 Psalm 119:129-144
- ☐ 24 Psalm 119:145-160
- ☐ 25 Psalm 119:161-176
- ☐ 26 James 1:1-27
- ☐ 27 James 2:1-26
- ☐ 28 James 3:1-18

- ☐ 29 James 4:1-17
- ☐ 30 James 5:1-20

4 WAYS TO GIVE



TXT

Text "JMC" to
817-790-9008



IN PERSON

Place your gift in
the offering plate.



MAIL

Joshua Methodist Church
P.O. Box 376
Joshua, TX 76058



ONLINE

joshuamethodist.church

love grow serve

Calendar

September 8 - 14

Sunday	Monday	Tuesday	Wednesday
7:30 am Morning Prayer 9:00 am Sunday School 10:00 am Pre-Service Prayer 10:30 am Worship Service After Service JMM	10am-12pm Helping Hands Food Pantry 2pm-4pm Helping Hands Food Pantry		7:00 am ROMEO 10:00am Bible Study 11:00am Prayer Group 5:00pm Prayer Group 6:00pm Wednesday Night Live
Thursday	Friday	Saturday	Notes
10am-12pm Helping Hands Food Pantry 2pm-4pm Helping Hands Food Pantry	6:00pm Singles (Chedester)		

September 15 - 21

Sunday	Monday	Tuesday	Wednesday
7:30am Morning Prayer 9:00am Sunday School 10:00am Pre-Service Prayer 10:30am Worship Service 2pm JMW 5pm Bulgarian Presentation/ JMC Potluck	10am-12pm Helping Hands Food Pantry 2pm-4pm Helping Hands Food Pantry		7:00am ROMEO 10:00am Bible Study 11:00am Prayer Group 11:30am LAB - Lunch Bunch 5:00pm Prayer Group 6:00pm Wednesday Night Live
Thursday	Friday	Saturday	Notes
10am-12pm Helping Hands Food Pantry 2pm-4pm Helping Hands Food Pantry 6:00pm LAB - Spicy Disasters		1pm-4pm Kairos Cookie Bake 5pm Game Night	

love grow serve

Notes

Church Council:

- Interim Admin Chair - Jerome O'Loughlin
- Admin Council Secretary - Pat Browder
- At Large - Jerome O'Loughlin, Palmer Byerley
- Chair - Congregational Care Ministry - Pat Bonds
- Chair - Finance - Lucy Dowings
- Chair - Staff Parish Relations - Tom Grabeal
- Chair - Radical Hospitality - Marsha Tucker
- Chair - Risk Taking Missions & Service - Melia Mehlhorn
- Chair - Trustees - Roy McKenzie
- Lay Leader - Barbara Crew
- JMM - Don Collins
- JMW - Lucy Dowings



Joshua Methodist Church
114 Paula Dr., Joshua, TX 76058
www.joshuamethodist.church
817-558-9801

Payton Carter
Senior Pastor
Pastor@joshuamethodist.church
♥♥♥♥♥♥♥♥♥♥
Lynn Collins
Operations Manager
Lynn@joshuamethodist.church

Please fill
out the
“FLAP” then
fold and
tear on the
perforated
line and
drop in the
offering
plate.



The FLAP

Joshua Methodist Church



love



grow



serve

As committed Christian Disciples,
we **love** God
grow in Grace
and **serve** others



9/8/2024

The FLAP

We're so glad that you are here!
Please take a few minutes to fill out
this card and put in the offering plate.

NAME

PHONE

EMAIL

ADDRESS

CHECK ALL THAT APPLY

- ☐ Member
- ☐ First-time Visitor
- ☐ Returning Visitor
- ☐ Interested in Membership
- ☐ Interested in Baptism
- ☐ Needing Prayer

Please fill
out the
“FLAP” then
fold and
tear on the
perforated
line and
drop in the
offering
plate.

