

Joshua Journal

Sept. 21, 2025

Be Strong
JOSHUA
& Courageous

SAVED BY A
Scarlet CORD

PAYTON CARTER

SCRIPTURE:
JOSHUA 2:1–21; 6:22–25



Joshua Methodist Church
114 Paula Dr., Joshua, TX 76058
www.joshuamethodist.church

817-558-9801

Office Hours

Mon - Thurs 9:30-4:00 (lunch 12-1)

Payton Carter

Senior Pastor

Pastor@joshuamethodist.church



Lynn Collins

Operations Manager

Lynn@joshuamethodist.church

Order of Worship

10:30 Service

Welcome

Apostles Creed

Opening Song Medley

Praise

God of Revival

Trust in God

Pastoral Prayer

Children's Time

Offering with Song

Doxology

Sermon

Joshua

Saved by a Scarlet Cord

Joshua 2:1–21; 6:22–25

Closing Song

Graves into Gardens

Mission Statement / Benediction

We are committed Christian disciples,
loving God, growing in grace and serving others

Sunday Spotlight

GriefShare®

Grief Support Group

*Help and encouragement
after the death of a
loved one*

At a GriefShare group, you'll find understanding, guidance, relief, and a safe place to navigate the challenges of grief. Come join us!

Contact Us Today

Sundays 4:00 – 6:00 P.M.
September 14 – December 14
Joshua Methodist Church
Chedester Hall
Contact:
Terri Curry 817-357-2624

griefshare.org

Lord's Acre

Book Nook

**Are your books starting to
look like this?**

**Donate the ones you'd
like to pass on to
Lord's Acre and put them
in Room 207.**

**(Marantha SS Classroom)
(books, CDs, DVDs, etc.)**



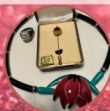
IT'S Glitter Gallery TIME

Support JMC Missions by donating your gently used jewelry, purses, scarves, belts, and more for our annual Glitter Gallery fundraiser!

This event is part of Joshua Methodist Church's Lord's Acre initiative, which raises funds for mission work.

*Donation boxes** can be found in the Friendship Hall and on the table in front of the church office.

Thank you for making a difference through your generous contributions!



Ministry News

LORD'S ACRE

Lord's Acre Donation Instructions

For more information contact

Lucy at 817-223-4926

You may bring your Lord's Acre donation items to the Church Gym, where a designated table will be set up for drop-off.

When placing your items on the table, please clearly note:

- **Donated by:** Your Name
- **Section Preference:** (e.g., Crafts, Silent Auction, Large Auction, etc.)

If you are unsure which section best fits your item and would like Lucy and her team to decide, simply write "Lucy's Choice."

All donations must be submitted by **Friday, September 26th**.

Joshua Methodist Church

Helping Hands Food Pantry

Fighting Hunger Together

Thank you for all that you give
we appreciate you!



Pantry Needs

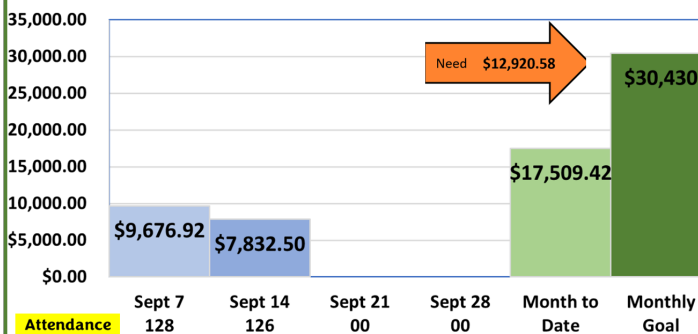
Tuna, Oatmeal packets,
Canned Green Veggies,
Jelly squeeze bottles &
Soap & Deodorant

In August we helped
97 families and
286 people

you can note on
your donation
"Helping Hands"



September Operating Funds



Ministry Opportunities

Got Dinner Plans?

Join us for dinner Wednesday Nights, from 6:30 - 8:00pm.

All you can eat for \$5.00/person or \$20/family of 4 or more.



WEDNESDAY NIGHT DINNER

SCAN THE QR CODE TO RSVP AND/OR COMPLETE YOUR PAYMENT FOR THE DINNER RESERVATION.
ALTERNATIVELY, YOU CAN ALSO PAY WITH CASH OR CHECK WHEN YOU ARRIVE.

SOCKTOBER

Every night in the United States, around 600,000 individuals find themselves living on the streets.

This **October**, **JUMPS** aims to demonstrate that even a simple gesture of kindness, like donating a **pair of socks**, can significantly impact the lives of our homeless neighbors.

We will be collecting sock-donations from **October 1 to November 1**, with all contributions going to the Johnson County Family Crisis Center.

Pumpkins

are coming
October 11
@ 9AM



Message Board

Cuddly Critters

are needed



No bigger than
6" in height.

Please give to
Marsha Tucker

WELCOME TEAM is recruiting

Do you have a friendly smile and a warm "hello"?
That's all it takes to make someone feel welcome at Joshua Methodist!
We're looking for **3 people** to be the **Welcome Team** each Sunday:

- One for each of the two front doors
- One to serve at the welcome counter

No experience needed – just a heart for hospitality.

If you're interested in serving, please reach out to **Marsha Tucker**
or contact the church office:

☎ 817-558-9801

✉ info@joshuamethodist.church

△ Looking for Welcome Teams for the next year - 2026

Operation: "Being Guest Ready" Commander in Charge: Pat Bonds



**SIGN UP
NOW**

**OCTOBER
25
8 AM - 1 PM**

Troops, your mission is clear!

On **Saturday, October 25** from **0800 to 1300 hours**, all units will report to the **Education Building** for a full-scale **clean-up and readiness operation**.

📅 **Date:** Saturday, October 25

🕒 **Time:** 8:00 AM – 1:00 PM

📍 **Mission Zone:** Church Education Bldg

- 📋 Each Sunday School class is responsible for its own classroom.
- 📋 Sign-up sheets are strategically placed throughout the building – make sure your unit (class) is enlisted.
- 🧹 Objectives: Sweep, scrub, straighten, and organize to achieve maximum guest readiness.

Remember: A clean classroom is a guest-ready classroom!

love grow serve

One Year Reading Plan

September

☐ **Day 245:** Ezekiel 28-30

☐ **Day 246:** Ezekiel 31-32

☐ **Day 247:** Ezekiel 33-35

☐ **Day 248:** Ezekiel 36-38

☐ **Day 249:** Ezekiel 39-40

☐ **Day 250:** Ezekiel 41-43

☐ **Day 251:** Ezekiel 44-46

☐ **Day 252:** Ezekiel 47-48

☐ **Day 253:** Daniel 1-3

☐ **Day 254:** Daniel 4-5

☐ **Day 255:** Daniel 6-8

☐ **Day 256:** Daniel 9-12

☐ **Day 257:** Hosea 1-4

☐ **Day 258:** Hosea 5-9

☐ **Day 259:** Hosea 10-14

☐ **Day 260:** Joel 1-3

☐ **Day 261:** Amos 1-4

☐ **Day 262:** Amos 5-9

☐ **Day 263:** Obadiah 1

☐ **Day 264:** Jonah 1-4

☐ **Day 265:** Micah 1-4

☐ **Day 266:** Micah 5-7

☐ **Day 267:** Nahum 1-3

☐ **Day 268:** Habakkuk 1-3

☐ **Day 269:** Zephaniah 1-3

☐ **Day 270:** Haggai 1-2

☐ **Day 271:** Zechariah 1-5

☐ **Day 272:** Zechariah 6-10

☐ **Day 273:** Zechariah 11-14

☐ **Day 274:** Malachi 1-4



Communication Requests

(Announcements, News & Updates)

Email, Journal, Website

Don't miss out!

Submit all communications by

12:00 pm Wednesdays

Please complete the PDF form available on the Resources Page. After filling it out, save the document to your computer and submit it by email to lynn@joshuamethodist.church

If you prefer to provide a printed copy, you may place it in the basket located on the wall just outside my office door should I be unavailable.

Get it in before the deadline!

Joshua 6:22-25 - Word Search

V	F	W	E	R	L	P	A	U	H	S	O	J	H	B
A	A	P	B	E	N	W	O	T	B	L	F	Y	J	J
L	V	P	H	H	V	D	I	S	R	M	S	R	W	O
R	S	R	E	T	S	I	S	E	E	A	J	U	D	L
G	F	O	H	A	Y	B	L	D	F	E	S	S	E	O
U	D	M	M	F	P	A	L	E	S	R	S	A	F	R
S	J	I	T	I	T	O	J	E	E	Z	R	E	I	D
E	P	S	Z	I	G	E	P	H	Z	S	H	R	S	Y
I	N	E	V	E	R	Y	T	H	I	N	G	T	P	N
P	P	E	G	I	J	O	S	M	T	I	O	V	I	E
S	S	R	C	Q	R	K	N	R	O	J	P	R	T	B
T	Y	H	S	B	F	M	E	M	B	T	J	N	B	I
Y	O	T	G	Y	J	V	L	E	Q	W	H	H	R	R
E	V	N	S	F	L	Q	J	P	P	H	F	E	C	E
Y	F	A	M	I	L	Y	J	Q	N	M	T	L	R	H
S	R	L	S	R	E	D	N	T	S	B	I	S	F	A
P	B	O	P	E	K	C	A	M	P	T	H	Z	S	B

BRONZE

BROTHERS

CAMP

EVERYTHING

FAMILY

FATHER

GOLD

IRON

ISRAEL

JERICHO

JOSHUA

KEEP

LORD

MOTHER

PROMISE

REHAB

RELATIVES

SAFE

SILVER

SISTERS

SPIES

TOWN

TREASURY

September 2025

Sunday	Monday	Tuesday	Wednesday	Thursday	Friday	Saturday
31	01 Labor Day Office & H.H. Pantry are Closed	02	03 11:30 LAB 5:30 Prayer	04 10-12 & 2-4 Helping Hands Pantry 6:00 LAB	05	06
07 WNL Meeting following church service	08 10-12 & 2-4 Helping Hands Pantry	09 6:30 Council Meeting	10 10:00 Bible Study 5:30 Prayer	11 10-12 & 2-4 Helping Hands Pantry	12 6:00 Singles	13
14 After Service: JMM After Service Ownership Class GriefShare 4-6 Chedester	15 10-12 & 2-4 Helping Hands Pantry	16	17 10:00 Bible Study 11:30 LAB 5:30 Prayer	18 10-12 & 2-4 Helping Hands Pantry 6:00 LAB	19	20 Kairos Cookies 10-6
21 After Service: JMW GriefShare 4-6 Chedester	22 10-12 & 2-4 Helping Hands Pantry	23	24 10:00 Bible Study 5:30 Prayer	25 10-12 & 2-4 Helping Hands Pantry	26	27 Lord's Acre 9-3
28 GriefShare 4-6 Chedester	29 10-12 & 2-4 Helping Hands Pantry	30	01	02	03	04

Notes :

Sunday Morning Activities:

7:30 am Morning Prayer
9:00 am Sunday School
10:30 am Worship Service

4 WAYS TO GIVE



TXT

Text "JMC" to
817-790-9008



IN PERSON

Place your gift in
the offering plate.



MAIL

Joshua Methodist Church
P.O. Box 376
Joshua, TX 76058



ONLINE

Scan the QR code
to be directed to
Amplify formerly
Mogive

Notes

Church Council:

Admin Chair - Jerome O'Loughlin

Admin Council Secretary - Pat Browder

At Large - Palmer Byerley, Angela Bradsher

Chair - Congregational Care Ministry - Pat Bonds & BJ Denson

Chair - Finance - Lucy Dowings

Chair - Staff Parish Relations - Becky O'Loughlin

Chair - Radical Hospitality - Marsha Tucker

Chair - Risk Taking Missions & Service - Melia Mehlhorn

Chair - Trustees - Roy McKenzie

Lay Leader - Barbara Crew

JMM - Don Collins

JMW - Lucy Dowings

Please fill
out the
“FLAP” then
fold and
tear on the
perforated
line and
drop in the
offering
plate.



The FLAP

Joshua Methodist Church



love



grow



serve

As committed Christian Disciples,
we **love** God
grow in Grace
and **serve** others



The FLAP

9/21/2025

We're so glad that you are here!
Please take a few minutes to fill out
this card and put in the offering plate.

NAME

PHONE

EMAIL

ADDRESS

Please select one

- ☐ Partner
- ☐ First-time Visitor
- ☐ Second-time Visitor
- ☐ Regular Attender

I would like to learn about (Check all that apply)

- ☐ Becoming a Partner
- ☐ Baptism
- ☐ Small Groups
- ☐ Serving Opportunities
- ☐ Joshua Methodist Ministries

I am in need of Prayer

I agree to the 90-day Challenge

- ☐ 90-day Challenge

Please fill
out the
“FLAP” then
fold and
tear on the
perforated
line and
drop in the
offering
plate.



Or you can
scan this **QR**
code and fill
out the form
online.

