

Joshua Methodist Church



love



grow



serve

114 Paula Drive, Joshua, Texas

Weekly Newsletter

Sept. 17, 2023



Scripture:
Ephesians 2:4-5

Order of Worship

10:30 Service

Welcome

Apostles Creed

Opening Song

All Creatures of our God & King (Red#34 vs 1,2,5)

Song

Cornerstone (Red#103)

Scandal of Grace (*handout*)

Pastoral Prayer/Lord's Prayer

Offering

Offertory Song

Grace, Greater than our Sin (Red#558)(Blue#365)

Doxology

Sermon

Scandalous Grace

Ephesians 2:4-5

Closing Song

I Surrender All (Red#607)(Blue#354)

Announcements

Mission Statement / Benediction

We are committed Christian disciples,
loving God, growing in grace and serving others

love

grow

serve

Today



Joshua Methodist Women

**will meet Sunday,
Sept 17th at 2:00pm**

Our speaker will be
Dana Walser
from the
Union Gospel Mission of Tarrant County

Today at 4:00 - 6:00

If you have experienced the death of a loved one, spouse, sibling, child, friend, join us for this Bible based program which provides insight and comfort into the grieving process.

Grief & Share®

Sept. 10 - Dec. 10

This is a 13 week program,
every Sunday 4-6PM in Chedester Hall.
Includes discussion, video and
workbook exercises.

**Presented by:
Cheryl Pritchett, Pat Bonds & Terri Curry**

love grow serve

This Week

Health Tips in the Wesleyan Tradition

5 Warning signs of Alzheimer's Disease

Source: Alzheimer's Association

01. MEMORY LOSS THAT DISRUPTS DAILY LIFE

02. CHALLENGES IN PLANNING AND PROBLEM SOLVING

03. DIFFICULTY COMPLETING FAMILIAR TASKS

04. CONFUSION WITH TIME AND/OR PLACE

05. TROUBLE UNDERSTANDING VISUAL IMAGES AND SPATIAL RELATIONSHIPS

(TO BE CONTINUED)



Thank you!
FOR SUPPORTING
HELPING HANDS PANTRY

Helping Hands Pantry

Donation Requests: **Please, No glass containers**

jelly,
soup (chicken noodle & tomato)
& 1-2 lb bag of sugar

The graphic features a collection of colorful hands in various colors (blue, green, orange, red, purple) reaching upwards. Sunflowers are scattered around the text.

love

grow

serve

This Week, cont'd



ROMEO meets Wednesdays at 7AM at the Brunch House for breakfast & fellowship. Men & Women are welcome

LORD'S ACRE

Please have your donated items in the gym by 5:00PM on Friday, you may bring them anytime during the week.

We also need some volunteers to be in the gym at 5:00PM on Friday to help set up tables and chairs for the event.

Newsletter
Wednesdays

Email & Website

12:00

Deadline

Please fill out the form that is on the table outside the office, or in the Fellowship Hall. Once complete, please place in the wall basket, right outside the office door

love grow serve

This Week, cont'd

Prayers

If you are having surgery or know someone who is, please let Margie Wilson know.

The prayer team would love to pray for you.

Margie Wilson
817-524-9277
wilsonmargie70@yahoo.com

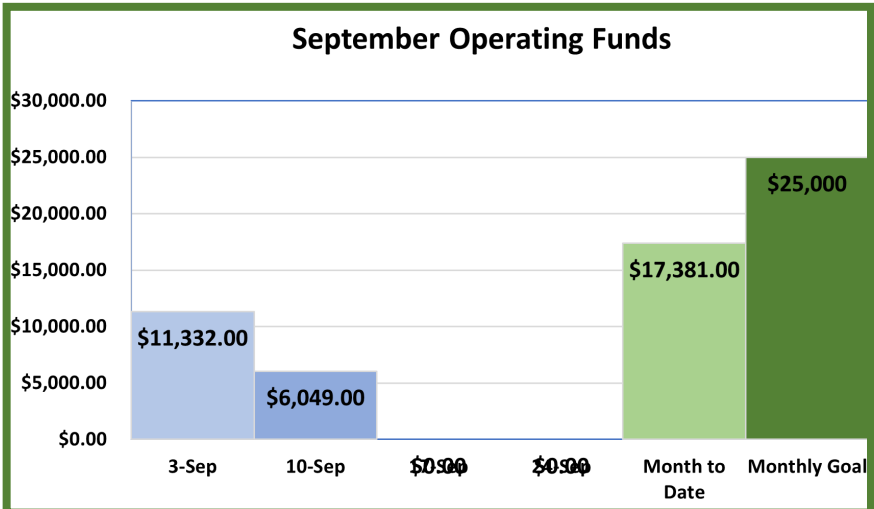


TAMALES



Javier Noriega is selling tamales, chicken, pork or beef, to contribute to a fund to refinish the 2nd half of the gym. Please pre-order your tamales by calling the church office. If you would like to contribute to this fund, please mark your money accordingly. Thank you.

Chicken or Pork Tamales - \$20/dozen
Beef Tamales - \$25/dozen



This Saturday

JOSHUA METHODIST CHURCH

114 Paula Drive, Joshua, TX 76058

SATURDAY SEPTEMBER 23, 2023

LORD'S ACRE

There will be rooms full of:

Baked Goods, Book Nook, Crafts, Jewelry
and Pantry Items

In the gym we will have a

Silent Auction (9:00AM - 11:30AM)

and a Large Auction (beginning at 12:30pm)

CAR SHOW

Registration for the car show begins at
9:00AM and ends at 10:00AM.

Registration fee is \$20 if turned in
before Sept. 5th or
\$25 day of show.

Car Show begins at 10:30AM

Judging is at 11:00AM

Awards will be given at 12:00PM

Best in Show People's Choice, Late Model,
New Model, Best in Class

OPEN AT

09:00 AM - 3:00 PM

LUNCH AT 11:00AM - 1:00PM

For More Information

joshuaumc.net



love

grow

serve

This Saturday, cont'd



*Dear Sisters & Brothers
in Christ*

Please join us in celebrating 140 years of
Methodism in Joshua, Texas

Saturday, September 23rd
9:00am - 12:00pm

114 Paula Drive
In our Church Worship Center

Please visit our 70th Lord's Acre in The
Education Bldg.

Joshua Methodist Church
114 Paula Drive
Joshua, TX 76058

love

grow

serve

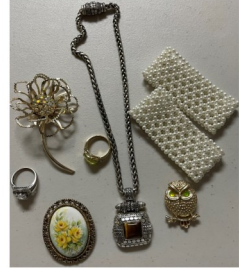
This Saturday, cont'd

Glitter Gallery

We are collecting jewelry and bling for Lord's Acre to support our missions. Please place in Glitter Gallery box in Friendship Hall or Church office.

We're collecting gently used jewelry, necklaces, bracelets, rings, broaches, earrings, watches, hair clasps, belts, scarves, purses.

We'll accept men's items, too - ties, tie clasps, watches and belts.



Lord's Acre

Book Nook

Are your books starting to look like this?



Donate the ones you'd like to pass on to Lord's Acre and put them in the Marantha Class.

(books, CDs, DVDs, etc.)



love



grow



serve

This Saturday, cont'd

BBO sandwiches (pulled pork) for Lord's Acre Lunch

Darrell Gregory will need some help from anyone who can.
Friday, Sept. 22 around 5-6PM, as it gets closer to the date,
please check with Darrell on time.

HAPPY FALL, Y'ALL



love

grow

serve

This Month

College students & Military

We are in need of donations for these, we usually provide \$20 gift cards for each one.

Please give donations to Marsha Tucker before Nov. 1

College students & Military

The prayer team would like to know the updated information for college students and those in the military.

Please see Margie Wilson



HELPING HANDS PANTRY

We are in need of volunteers with pick-up trucks to pick up the TAFB order for the Helping Hands Food Pantry, once or twice a month.

(Wednesday or Thursday)
to be put on the list, please call the office or get with Roy.

Thank you



Joshua Methodist Church



