

Joshua Methodist Church



love



grow



serve

114 Paula Drive, Joshua, Texas

Weekly Newsletter

Sept. 10, 2023



Scripture:
Luke 19:1-10

Order of Worship

10:30 Service

Welcome

Apostles Creed

Opening Song

I Stand Amazed (Red#122)(Blue#371)

Song

Everlasting God (*handout*)
Goodness of God (*handout*)

Pastoral Prayer/Lord's Prayer

Offering

Offertory Song

What a Friend We Have in Jesus (Red#116)(Blue#526)

Doxology

Sermon

Scandalous Grace
Luke 19:1-10

Closing Song

Scandal of Grace (*handout*)

Announcements

Mission Statement / Benediction

We are committed Christian disciples,
loving God, growing in grace and serving others

love

grow

serve

Today



JMM

Joshua Methodist Men

Joshua Methodist Men

meet Sunday following the church service in the gym
Lunch will be provided in the gym.

Today at 4:00 - 6:00

If you have experienced the death of a loved one, spouse, sibling, child, friend, join us for this Bible based program which provides insight and comfort into the grieving process.

GriefShare®

Sept. 10 - Dec. 10

This is a 13 week program, every Sunday 4-6PM in Chedester Hall. Includes discussion, video and workbook exercises.

Presented by:
Cheryl Pritchett, Pat Bonds & Terri Curry

love grow serve

This Week

Health Tips in the Wesleyan Tradition

5 Tips to lower fall risk

Source: Right at Home, HomeCare Group

01. HAVE VISION AND HEARING CHECKED

02. REMOVE TRIP HAZARDS IN YOUR HOME

03. ASK HEALTH CARE PROVIDER TO REVIEW YOUR MEDICATIONS
Side effects of some meds can cause mobility issues

04. AVOID DISTRACTED WALKING

05. USE CANES AND WALKERS CORRECTLY

Helping Hands Pantry

Donation Requests:

Please, No glass containers

1 lb bag of flour, rice, pinto beans
& 2 lb bag of sugar



Thank
You

For supporting Helping Hands Pantry

ROMEO

Revised Old Men Eating Out



ROMEO meets Wednesdays at 7AM
at the Brunch House for
breakfast & fellowship.
Men & Women are welcome

This Week, cont'd

Safety Team First Aid

Wednesday, Sept. 13
6:30 - 7:30PM

Presenters will cover first aid information in lecture format with a handout, show a video, we will have time for Q&A

Join us for discussion and an overview on first aid. Bring your concerns, questions and comments.



Personal Care products 9th Grade Campus

We are collecting personal care products for the boys & girls at the 9th grade campus, there are a few in need of soap, deo, etc. please bring the items to the church office.

Thank you

Newsletter

Wednesdays

12:00

Email & Website

Deadline

Please fill out the form that is on the table outside the office, or in the Fellowship Hall. Once complete, please place in the wall basket, right outside the office door

This Week, cont'd

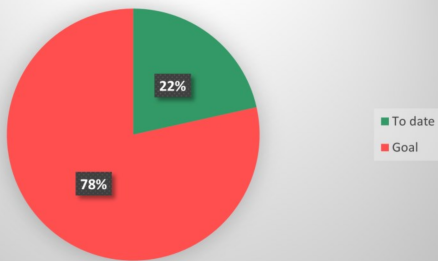
TAMALES



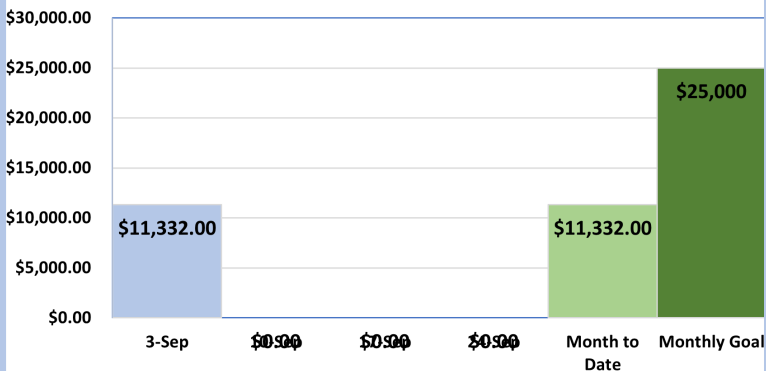
Javier Noriega is selling tamales, chicken, pork or beef, to contribute to a fund to refinish the 2nd half of the gym. Please pre-order your tamales by calling the church office. If you would like to contribute to this fund, please mark your money accordingly. Thank you.

Chicken or Pork Tamales - \$20/dozen
 Beef Tamales - \$25/dozen

Gym Floor Waxing Fund



September Operating Funds



This Month

College students & Military

We are in need of donations for these, we usually provide \$20 gift cards for each one.

Please give donations to Marsha Tucker before Nov. 1

College students & Military

The prayer team would like to know the updated information for college students and those in the military. Please see Margie Wilson



HELPING HANDS PANTRY

We are in need of volunteers with pick-up trucks to pick up the TAFB order for the Helping Hands Food Pantry, once or twice a month.

(Wednesday or Thursday)
to be put on the list, please call the office or get with Roy.

Thank you



love



grow



serve

This Month, cont'd



Dear Sisters & Brothers
in Christ

Please join us in celebrating 140 years of
Methodism in Joshua, Texas

Saturday, September 23rd
9:00am - 12:00pm

114 Paula Drive
In our Church Worship Center

Please visit our 70th Lord's Acre in The
Education Bldg.

Joshua Methodist Church
114 Paula Drive
Joshua, TX 76058

love

grow

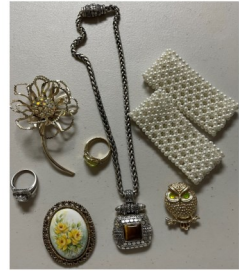
serve

This Month, cont'd

Glitter Gallery

We are collecting jewelry and bling for Lord's Acre to support our missions. Please place in Glitter Gallery box in Friendship Hall or Church office.

We're collecting gently used jewelry, necklaces, bracelets, rings, broaches, earrings, watches, hair clasps, belts, scarves, purses. We'll accept men's items, too - ties, tie clasps, watches and belts.



Lord's Acre

Book Nook

Are your books starting to look like this?



Donate the ones you'd like to pass on to Lord's Acre and put them in the Marantha Class.
(books, CDs, DVDs, etc.)



love



grow



serve

This Month, cont'd

BBO sandwiches (pulled pork) for Lord's Acre Lunch

Darrell Gregory will need some help from anyone who can.
Friday, Sept. 22 around 5-6PM, as it gets closer to the date,
please check with Darrell on time.



HAPPY FALL, Y'ALL



love

grow

serve

This Month, cont'd

JOSHUA METHODIST CHURCH

114 Paula Drive, Joshua, TX 76058

SATURDAY SEPTEMBER 23, 2023

LORD'S ACRE

There will be rooms full of:

Baked Goods, Book Nook, Crafts, Jewelry
and Pantry Items

In the gym we will have a

Silent Auction (9:00AM - 11:30AM)

and a Large Auction (beginning at 12:30pm)

CAR SHOW

Registration for the car show begins at
9:00AM and ends at 10:00AM.

Registration fee is \$20 if turned in
before Sept. 5th or

\$25 day of show.

Car Show begins at 10:30AM

Judging is at 11:00AM

Awards will be given at 12:00PM

Best in Show People's Choice, Late Model,

New Model, Best in Class

OPEN AT

09:00 AM - 3:00 PM

LUNCH AT 11:00AM - 1:00PM

For More Information

joshuaumc.net



Notes



Joshua Methodist Church
www.joshuaumc.net
817-558-9801

Senior Pastor
Payton Carter
Pastor@joshuamethodist.church
Office Administrator
Lynn Collins
Lynn@joshuamethodist.church