

Joshua Journal

March 29, 2026



Palm Sunday

Triumphal Entry

Matthew 21:1-17

Payton Carter



Joshua Methodist Church

114 Paula Dr., Joshua, TX 76058

www.joshuamethodist.church

817-558-9801 ext.105

Office Hours

Mon - Thurs 9:30-4:00 (lunch 12-1)

Payton Carter

Senior Pastor

Pastor@joshuamethodist.church



Lynn Collins

Operations Manager

Lynn@joshuamethodist.church

Order of Worship

10:30 Service

Welcome

Apostles Creed

Children's Time

Worship Songs

Pastoral Prayer

Sermon

The Triumphal Entry
Matthew 21:1-17
Payton Carter

Offertory

Doxology

Worship Songs

Mission Statement / Benediction

We are committed Christian disciples,
loving God, growing in grace and serving others



Ministry News

Help Us Get Ready for the Easter Egg Hunt!

Pick up a bag of eggs from the Friendship Hall (instructions included), fill them, and return by **April 1**.

We appreciate your help in making this a fun day for our kids!

Methodist Men will be going to the:

Saturday, April 11th



We will meet at church at **9:00AM** & leave from there.

All Men are Invited!



- Massive Collection: Over 3,000 rare antique toys, including Tippco die-cast models and vintage tin, wind-up, and pressed steel collectibles.
- Rare & Collectible Cars: Showcasing over 200 rare and collectible cars, including: 1994 Jaguar XJ220, 2004 Mercedes 300SL Gullwing, 1991 Acura NSX, and 1967 Toyota 2000GT and so much more.

www.dfwcarandtoymuseum.com

KAIROS COOKIE
PRISON MINISTRY
BAKE
SATURDAY, APRIL 11
IN CHURCH KITCHEN

TWO BAKING SHIFTS:
8AM - NOON & 1-5PM

NEED 5 VOLUNTEERS FOR EACH SHIFT
CAN YOU HELP? CONTACT ANGELA BRADSHER
OR DIANE COLLINS

Ministry Opportunities



EASTER EGG HUNT

Open to the Community

Grab your baskets and bring the whole crew – it's time for an egg-citing Easter adventure!
There will be photo opportunities with the Easter Bunny!!

Sunday
April 5, 2026

Joshua Methodist Church
114 Paula Drive, Joshua, TX 76058

Start From
After Church Service



GriefShare

Grief Support Group

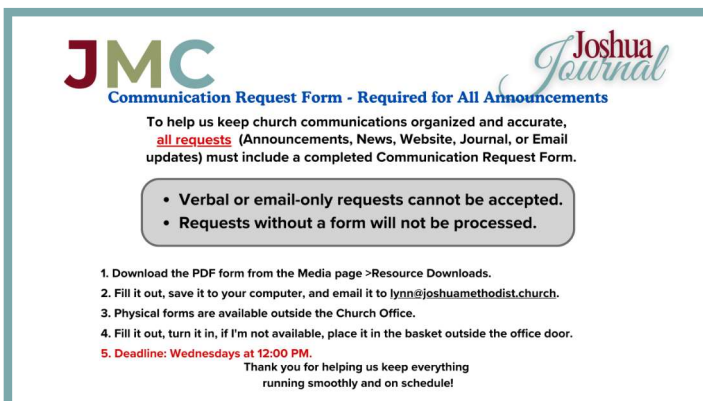
A safe space to journey through loss together.
You don't have to walk this path alone.

Every Sunday
4:00 - 6:00 pm

Facilitator
Terri Curry

Feb. 15 - May 10

- Joshua Methodist Church
- Chedester Hall
- 114 Paula Drive, Joshua, TX 76058



JMC Journal

Communication Request Form - Required for All Announcements

To help us keep church communications organized and accurate, **all requests** (Announcements, News, Website, Journal, or Email updates) must include a completed Communication Request Form.

- Verbal or email-only requests cannot be accepted.
- Requests without a form will not be processed.

- Download the PDF form from the Media page >Resource Downloads.
- Fill it out, save it to your computer, and email it to lynn@joshuamethodist.church.
- Physical forms are available outside the Church Office.
- Fill it out, turn it in, if I'm not available, place it in the basket outside the office door.
- Deadline: **Wednesdays at 12:00 PM.**

Thank you for helping us keep everything running smoothly and on schedule!

Message Board

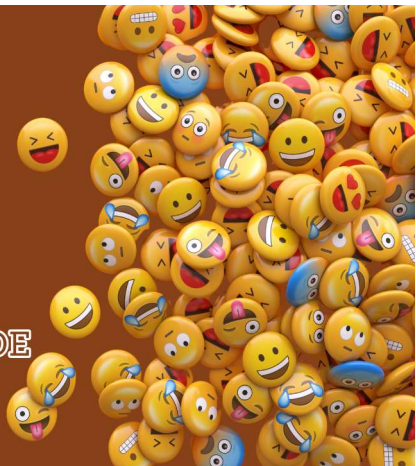


ReachJoshua.com

- ✓ Had a spiritual conversation
- ✓ Invited someone to church
- ✓ Performed an act of love
- ✓ Shared the gospel

Health

**Let
emotions
subside,
BEFORE YOU DECIDE**



Message Board



Youth

Spring Dinner Schedule

The link to sign up is on Facebook and the JMC Online Edition weekly email.

YOUTH SUNDAY DINNERS — SPRING SIGN-UP

Each Sunday evening our youth gather for games, dinner, and worship together.

We are building our Spring Dinner Schedule (March–May) and would love for

families, small groups, or individuals to sign up for a date.

Meals typically serve approximately 15 students and leaders.

You may:

- Provide the full meal
- Partner with others
- Sponsor a pizza night
- Provide a main dish, side, or dessert

Thank you for investing in the next generation.
Your support makes a real difference.

Bible Reading Plan

March

- Day 1 ○ Luke 9:28-36
- Day 2 ○ Psalm 63
- Day 3 ○ Isaiah 40:1-11
- Day 4 ○ Matthew 4:1-11
- Day 5 ○ Hebrews 4:14-16
- Day 6 ○ Matthew 5:1-12
- Day 7 ○ Matthew 5:38-48
- Day 8 ○ Luke 13:1-9
- Day 9 ○ Matthew 6:1-18
- Day 10 ○ Matthew 6:19-34
- Day 11 ○ Luke 10:25-37
- Day 12 ○ Luke 11:1-13
- Day 13 ○ John 6:35-40
- Day 14 ○ Mark 2:1-12
- Day 15 ○ Luke 15:1-3, 11-32
- Day 16 ○ Mark 4:35-41
- Day 17 ○ Luke 7:36-50
- Day 18 ○ John 4:1-26
- Day 19 ○ John 9:1-41
- Day 20 ○ John 11:1-44
- Day 21 ○ Psalm 130
- Day 22 ○ John 11:45-57
- Day 23 ○ Mark 8:27-38
- Day 24 ○ John 12:20-33
- Day 25 ○ Philippians 2:1-11
- Day 26 ○ Hebrews 5:7-10
- Day 27 ○ Isaiah 52:13 - 53:12
- Day 28 ○ Psalm 22
- Day 29 ○ Luke 19:28-40
- Day 30 ○ John 12:1-8
- Day 31 ○ John 13:1-17, 31-35

Matthew 21:1-17 - Word Search

| | | | | | | | | | | | | | | |
|---|---|---|---|---|---|---|---|---|---|---|---|---|---|---|
| B | K | W | C | H | T | I | A | F | V | I | D | J | T | R |
| Y | D | D | A | V | I | D | G | G | S | S | M | R | E | K |
| M | P | B | Q | Q | G | A | S | E | R | I | D | Y | O | N |
| O | R | D | C | D | L | E | L | T | R | J | A | T | G | L |
| U | O | R | K | I | C | P | G | A | E | R | M | L | A | P |
| N | P | W | L | H | I | G | C | A | P | M | R | V | N | D |
| T | H | E | D | C | J | L | Q | N | H | E | P | F | Z | E |
| O | E | U | S | C | E | J | P | T | T | P | H | L | A | S |
| F | T | I | S | S | R | Y | N | H | Y | R | H | Q | E | S |
| O | D | N | E | P | U | O | G | T | E | A | E | T | W | E |
| L | G | A | H | J | S | U | W | O | K | I | H | Q | E | L |
| I | T | Z | C | B | A | U | H | D | N | S | W | S | B | B |
| V | G | A | N | D | L | O | N | O | O | E | U | P | E | P |
| E | T | R | A | G | E | R | I | O | D | R | P | S | M | S |
| S | Q | E | R | G | M | Z | X | C | S | L | P | P | E | G |
| B | L | T | B | B | N | A | N | N | A | S | O | H | T | J |
| C | W | H | K | W | K | G | N | I | K | A | G | L | C | W |

BETHPHAGE

BLESSED

BRANCHES

CROWD

DAUGHTER

DAVID

DISCIPLES

DONKEY

FAITH

GALILEE

HOSANNA

JERUSALEM

JESUS

KING

LORD

MIRACLES

MOUNT OF OLIVES

NAZARETH

PALM

PRAISE

PRAYER

PROPHET

SON

TEMPLE

ZION

MARCH 2026

| Sunday | Monday | Tuesday | Wednesday | Thursday | Friday | Saturday |
|---|---|----------------------------------|--|---|-----------------------|----------|
| 01 4:12 Youth | 02 10-12 & 2-4 Helping Hands Pantry | 03 | 04 NO Bible Study 11:30 LAB 6:30 Dinner Church | 05 10-12 & 2-4 Helping Hands Pantry | 06 | 07 |
| 08 After Service: JMM 4-6pm GriefShare 4:12 Youth | 09 10-12 & 2-4 Helping Hands Pantry | 10 | 11 10:00 Bible Study 6:30 Dinner Church | 12 10-12 & 2-4 Helping Hands Pantry | 13 6:00 Singles | 14 |
| 15 After Service: JMW 4-6pm GriefShare 4:12 Youth | 16 10-12 & 2-4 Helping Hands Pantry | 17 6:30 Council Meeting | 18 10:00 Bible Study 11:30 LAB 6:30 Dinner Church | 19 10-12 & 2-4 Helping Hands Pantry | 20 | 21 |
| 22 4-6pm GriefShare 4:12 Youth | 23 10-12 & 2-4 Helping Hands Pantry | 24 | 25 10:00 Bible Study 6:00 Dinner Church | 26 10-12 & 2-4 Helping Hands Pantry | 27 | 28 |
| 29 4-6pm GriefShare 4:12 Youth | 30 10-12 & 2-4 Helping Hands Pantry | 31 | 01 | 02 | 03 | 04 |

Notes :

Sunday Morning Activities:
 7:30 am Morning Prayer
 9:00-10:00 am Sunday School
 10:30 am Worship Service
 4:12 pm Youth

Daylight Savings -
Spring Forward



4 WAYS TO GIVE



TXT
Text "JMC" to
817-790-9008



IN PERSON
Place your gift in
the offering plate.



MAIL
Joshua Methodist Church
P.O. Box 376
Joshua, TX 76058



ONLINE
Scan the QR code
to be directed to
Amplify formerly
Mogive

The FLAP

Please fill out the other side of the “FLAP” then fold and tear on the perforated line and drop in the offering plate.



Joshua Methodist Church



love



grow



serve

As committed Christian Disciples,
we **love** God
grow in Grace
and **serve** others



The FLAP

3/29/2026

We're so glad that you are here!
Please take a few minutes to fill out
this card and put in the offering plate.

Name

Phone - (if changed)

Email - (if changed)

Address - (if changed)

Please select one

- Partner
- First-time Visitor
- Second-time Visitor
- Regular Attender

I would like to learn about (Check all that apply)

- Becoming a Partner
- Baptism
- Small Groups
- Serving Opportunities
- Joshua Methodist Ministries

I am in need of Prayer

Please fill out the “FLAP” then fold and tear on the perforated line and drop in the offering plate.



Or you can scan this QR code and fill out the form online.

