

# Joshua Journal

March 23, 2025

## THE SOLUTION...



JOHN 6:1-15



**Joshua Methodist Church**  
114 Paula Dr., Joshua, TX 76058  
[www.joshuamethodist.church](http://www.joshuamethodist.church)  
817-558-9801  
Office Hours  
Mon - Thurs 9:30-4:00 (lunch 12-1)

Payton Carter  
**Senior Pastor**  
[Pastor@joshuamethodist.church](mailto:Pastor@joshuamethodist.church)  
♥️🌿♥️🌿♥️🌿♥️🌿♥️🌿♥️🌿  
Lynn Collins  
**Operations Manager**  
[Lynn@joshuamethodist.church](mailto:Lynn@joshuamethodist.church)

# Order of Worship

## **10:30 Service**

**Welcome**

**Apostles Creed**

**Opening Songs**

Mansion over the Hilltop

All Things New

I'll Fly Away

**Pastoral Prayer**

**Offering**

**Offertory Song**

Great are You Lord

**Doxology**

**Children's Time**

**Sermon**

The Solution

John 6:1-15

**Closing Song**

O Come to the Altar

**Mission Statement / Benediction**

We are committed Christian disciples,  
loving God, growing in grace and serving others

# Sunday Spotlight

Grief & Share

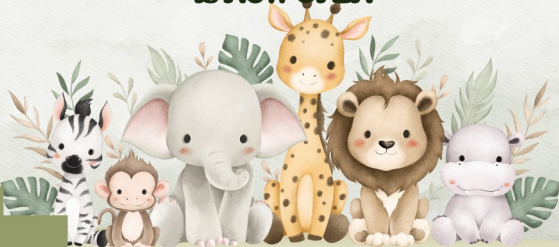
## Grief Support Group

Help and encouragement after the death of a loved one

Sundays 4:00-6:00pm,  
January 19 - April 13

Questions? please contact  
Cheryl Pritchett 817-919-4191  
[griefshare.org/findagroup](http://griefshare.org/findagroup)

## The Church Nursery Is Now OPEN



Please check in at the door on  
the left front of the sanctuary.

SANCTUARY CLEANING CREW

## VOLUNTEERS NEEDED!

- vacuuming
- window cleaning
- dusting
- bathrooms
- taking out the trash

**Interested In Joining Us?**

Inquire about it in the office

# Ministry News

Day:  
**March 26**

Time:  
**6:30pm**

## Wednesday Night Live

**Breakfast for Dinner**

biscuits and gravy, pancakes, etc.

**Dessert**



Join us  
**Wednesday nights**  
for dinner & fellowship

**Helping Hands Food Pantry**  
Fighting Hunger Together



There are boxes in the  
Friendship Hall listing  
all our needs.

you can notate on  
your donation  
"Helping Hands"



**Saturday, March 29th**

**5:00 - 7:00pm**

**GAME NIGHT**

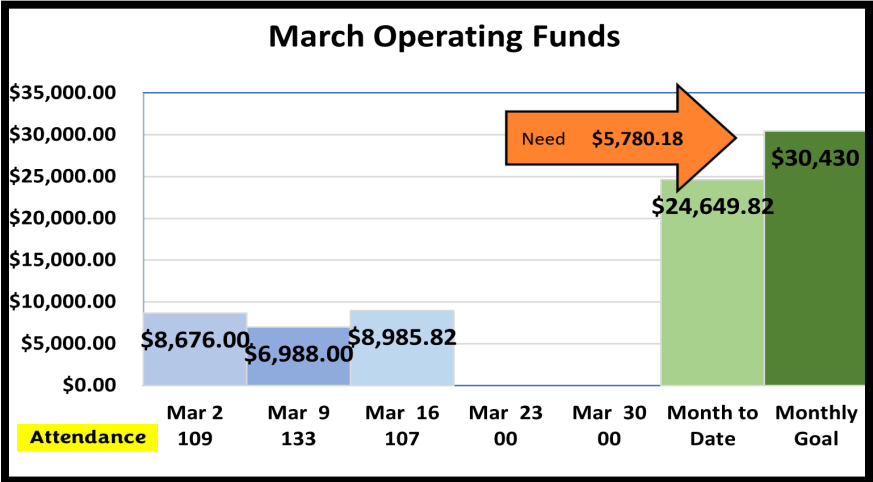
**COME JOIN US**

Bring your favorite Dip & Chips  
and your favorite game





# Message Board



## Joshua ISD Weekend Food Program

### Support Our Mission: Backpack Program

We are proud to announce that our Backpack Program has reached a new milestone - supporting **146** children in the Joshua School District!

You can help us continue this initiative by providing support. The program provides nutritious meals that the children can take home in their backpacks.

## Backpack Program

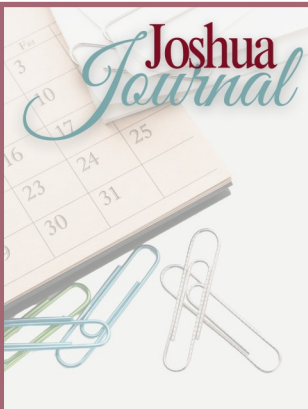
# Upcoming Events

JMC'S FAMILY FUNDAY SUNDAY

## SAVE THE DATE

MAY THE LORD BE WITH YOU

### MORE DETAILS COMING SOON



**Communication Requests**  
(Announcements, News & Updates)

Email, Journal, Website  
Don't miss out!  
Submit all communications by

**12:00 pm Wednesdays**

If I'm not in my office, kindly place it in the basket located on the wall right outside my office door.

or email:  
[lynn@joshuamethodist.church](mailto:lynn@joshuamethodist.church)

Get it in before the deadline!

## 4 WAYS TO GIVE



**TXT**

Text "JMC" to  
817-790-9008



**IN PERSON**

Place your gift in  
the offering plate.



**MAIL**

Joshua Methodist Church  
P.O. Box 376  
Joshua, TX 76058



**ONLINE**

Scan the QR code  
to be directed to  
Amplify formerly  
Mogive

love

grow

serve

# One Year Reading Plan

## March

Day 60: Deuteronomy 26-27

Day 61: Deuteronomy 28-29

Day 62: Deuteronomy 30-32

Day 63: Deuteronomy 33-34

Day 64: Joshua 1-4

Day 65: Joshua 5-7

Day 66: Joshua 8-10

Day 67: Joshua 11-13

Day 68: Joshua 14-17

Day 69: Joshua 18-20

Day 70: Joshua 21-22

Day 71: Joshua 23-24

Day 72: Judges 1-3

Day 73: Judges 4-5

Day 74: Judges 6-8

Day 75: Judges 9-10

Day 76: Judges 11-13

Day 77: Judges 14-16

Day 78: Judges 17-19

Day 79: Judges 20-21

Day 80: Ruth 1-4

Day 81: 1 Samuel 1-3

Day 82: 1 Samuel 4-7

Day 83: 1 Samuel 8-12

Day 84: 1 Samuel 13-14

Day 85: 1 Samuel 15-16

Day 86: 1 Samuel 17-18

Day 87: 1 Samuel 19-21

Day 88: 1 Samuel 22-24

Day 89: 1 Samuel 25-27

Day 90: 1 Samuel 28-31

Joshua Methodist Church



*love*



*grow*



*serve*

## John 6:1-15 - Word Search

E G T D E Y A G E R I P T D C T  
P F N C B S I L V L S F D O F W  
S N B I T R E Y J L E P W O S E  
W E U T S S S T T R R T O F E L  
O T W M K S M P R S V K R D G V  
M T B Q H I E K E H A W C M F E  
B Y W M H O S L S A N K F W M D  
O A M O P D P F B R T X K O K D  
I J R L W I E T F I S H E V D O  
T S E L C A R I M N F U C S T Q  
V H V S D U T I L G S L G L C Y  
E S I B U I I P T P P N E N D A  
U D F F H S P H J P I F W W Y X  
P F T I N T A L K H T T M V E J  
J P S I L N I U C O F F L F M G  
C B P S K L O A V E S D T U T Z  
F R W F I M E E F P L T Y J M T  
K P U A J T R F D S C X M K V M  
V L E L M S F P R O V I S I O N

**BLESSING**

**CROWD**

**DISCIPLES**

**FAITH**

**FISH**

**FIVE**

**FOOD**

**JESUS**

**LEFTOVERS**

**LOAVES**

**MIRACLES**

**MULTIPLIED**

**PEOPLE**

**PROVISION**

**SERVANTS**

**SHARING**

**TEACHINGS**

**THANKFUL**

**TWELVE**

**TWO**



# March 2025

Sunday    Monday    Tuesday    Wednesday    Thursday    Friday    Saturday

<u>23</u>	<u>24</u>	<u>25</u>	<u>26</u>	<u>27</u>	<u>28</u>	<u>01</u> 9-3 Stephen Ministry Training
<u>02</u>  4-6pm GriefShare	<u>03</u> 10-12 & 2-4 Helping Hands Pantry	<u>04</u>	<u>05</u> NO Bible Study 11:30 LAB 5:00 Prayer 6:30 Ash Wed WNL following service	<u>06</u> 10-12 & 2-4 Helping H. Pantry 6:00 LAB 6:00 Mission Mtg	<u>07</u>	<u>08</u>
<u>09</u> Stephen Minister Commission After Service: JMM 4-6pm GriefShare	<u>10</u> 10-12 & 2-4 Helping Hands Pantry	<u>11</u> 6:30 Council Meeting	<u>12</u> 10:00 Bible Study 5:00 Prayer 6:00 WNL	<u>13</u> 10-12 & 2-4 Helping Hands Pantry	<u>14</u>	<u>15</u>
<u>16</u> After Service Joshua Methodist Women 4-6pm GriefShare	<u>17</u> 10-12 & 2-4 Helping Hands Pantry	<u>18</u> 7:00 Choir practice	<u>19</u> 10:00 Bible Study 11:30 LAB 5:00 Prayer 6:00 WNL	<u>20</u> 10-12 & 2-4 Helping Hands Pantry 6:00 LAB	<u>21</u>	<u>22</u> 8:00-? Church- wide Workday
<u>23</u>  4-6pm GriefShare	<u>24</u> 10-12 & 2-4 Helping Hands Pantry	<u>25</u>	<u>26</u> 10:00 Bible Study 5:00 Prayer 6:00 WNL	<u>27</u> 10-12 & 2-4 Helping Hands Pantry	<u>28</u>	<u>29</u> 5-7 Game Night
<u>30</u>  4-6pm GriefShare	<u>31</u> 10-12 & 2-4 Helping Hands Pantry	<u>01</u>	<u>02</u> 10:00 Bible Study 5:00 Prayer 6:00 WNL	<u>03</u> 10-12 & 2-4 Helping Hands Pantry	<u>04</u>	<u>05</u>

## Notes :

### Sunday Morning Activities:

7:30 am Morning Prayer

9:00 am Sunday School

10:30 am Worship Service

# Notes

• • • • • • • • • • • • • • •  
• • • • • • • • • • • • • • •  
• • • • • • • • • • • • • • •  
• • • • • • • • • • • • • • •  
• • • • • • • • • • • • • • •  
• • • • • • • • • • • • • • •  
• • • • • • • • • • • • • • •  
• • • • • • • • • • • • • • •  
• • • • • • • • • • • • • • •  
• • • • • • • • • • • • • • •  
• • • • • • • • • • • • • • •  
• • • • • • • • • • • • • • •  
• • • • • • • • • • • • • • •  
• • • • • • • • • • • • • • •

## **Church Council:**

Admin Chair - Jerome O'Loughlin

Admin Council Secretary - Pat Browder

At Large - Palmer Byerley, Angela Bradsher

Chair - Congregational Care Ministry - Pat Bonds & BJ Denson

Chair - Finance - Lucy Dowings

Chair - Staff Parish Relations - Becky O'Loughlin

Chair - Radical Hospitality - Marsha Tucker

Chair - Risk Taking Missions & Service - Melia Mehlhorn

Chair - Trustees - Roy McKenzie

Lay Leader - Barbara Crew

JMM - Don Collins

JMW - Lucy Dowings

Please fill out the “FLAP” then fold and tear on the perforated line and drop in the offering plate.



# The FLAP

## Joshua Methodist Church



*love*



*grow*



*serve*

As committed Christian Disciples,  
we **love** God  
**grow** in Grace  
and **serve** others



# The FLAP 3/23/2025

We're so glad that you are here!  
Please take a few minutes to fill out  
this card and put in the offering plate.

**NAME**

**PHONE**

**EMAIL**

**ADDRESS**

**Please select one**

- Partner
- First-time Visitor
- Second-time Visitor
- Regular Attender

**I would like to learn about (Check all that apply)**

- Becoming a Partner
- Baptism
- Small Groups
- Serving Opportunities
- Joshua Methodist Ministries

**I am in need of Prayer**

Please fill out the “FLAP” then fold and tear on the perforated line and drop in the offering plate.



Or you can scan this **QR** code and fill out the form online.

