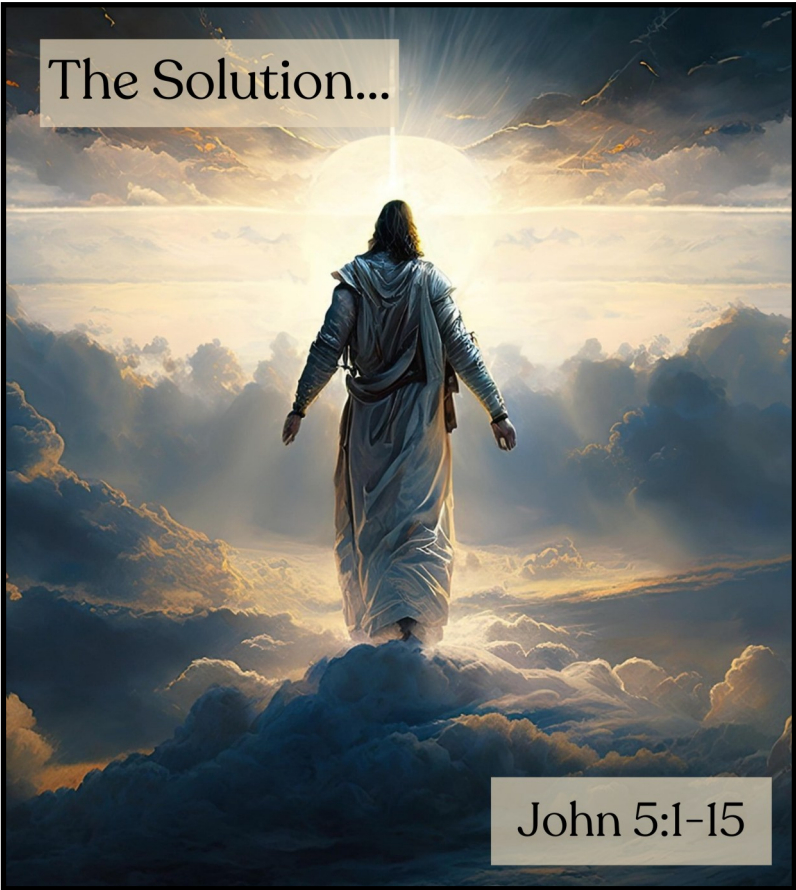


Joshua Journal

March 16, 2025

The Solution...



John 5:1-15



Joshua Methodist Church

114 Paula Dr., Joshua, TX 76058

www.joshuamethodist.church

817-558-9801

Office Hours

Mon - Thurs 9:30-4:00 (lunch 12-1)

Payton Carter

Senior Pastor

Pastor@joshuamethodist.church



Lynn Collins

Operations Manager

Lynn@joshuamethodist.church

Order of Worship

10:30 Service

Welcome

Apostles Creed

Opening Songs

Way Maker
Your Love Defends Me

Pastoral Prayer

Offering

Offertory Song

Standing on the Promises

Doxology

Children's Time

Sermon

The Solution
John 5:1-15

Closing Song

Change My Heart Oh God

Mission Statement / Benediction

We are committed Christian disciples,
loving God, growing in grace and serving others

Sunday Spotlight

Joshua Methodist Women

will meet after church Sunday

Come join us for a

Taste of Ireland

and

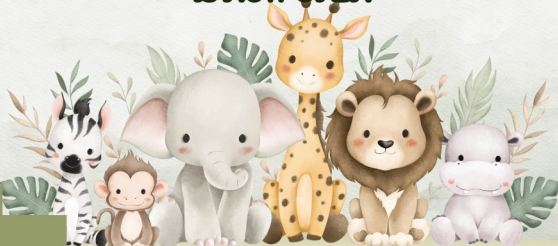
a program describing the needs of the

WOMEN'S PRISON MINISTRY

presented by Pat Bonds



The Church Nursery Is Now OPEN



Please check in at the door on
the left front of the sanctuary.

Grief & Share

Grief Support Group

Help and encouragement after the death of a loved one

**Sundays 4:00-6:00pm,
January 19 - April 13**

Questions? please contact
Cheryl Pritchett 817-919-4191

griefshare.org/findagroup

Ministry News

Helping Hands Food Pantry Fighting Hunger Together



There are boxes in the
Friendship Hall listing
all our needs.

you can note on
your donation
"Helping Hands"



Joshua ISD Weekend Food Program

Support Our Mission: Backpack Program

We are proud to announce that our Backpack Program has reached a new milestone - supporting **146** children in the Joshua School District!

You can help us continue this initiative by providing support. The program provides nutritious meals that the children can take home in their backpacks.

Backpack Program

Day:
March 19

Time:
6:30pm

Wednesday Night Live

Spaghetti/Tortellini

Salad

Dessert



Join us
Wednesday nights
for dinner & fellowship

Message Board

CHURCH-WIDE WORKDAY

**SATURDAY, MARCH 22, 2025
RAIN OR SHINE
8:00 - ?**

Bring impact wrenches if you have them.

There is work for everyone

The Seekers Sunday School Class

Sundays at 9:00AM in the Pastor's Office
It is open to adults of all ages.



Question:

As the Jews are God's chosen people, are their sins greater than the sins of the Gentile (non-Jews)?



The class is led by

Bonny Jenista, Roger Snook & Lee Elliott
If you have any questions, please contact
Bonny at 682-582-6167

We look forward to meeting you!

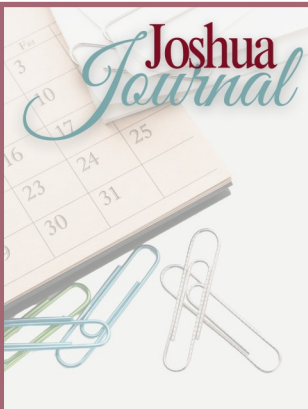
Upcoming Events

JMC'S FAMILY FUNDAY SUNDAY

SAVE THE DATE

MAY THE LORD BE WITH YOU

MORE DETAILS COMING SOON



Communication Requests
(Announcements, News & Updates)

Email, Journal, Website
Don't miss out!
Submit all communications by

12:00 pm Wednesdays

If I'm not in my office, kindly place it in the basket located on the wall right outside my office door.

or email:
lynn@joshuamethodist.church

Get it in before the deadline!

4 WAYS TO GIVE



TXT

Text "JMC" to
817-790-9008



IN PERSON

Place your gift in
the offering plate.



MAIL

Joshua Methodist Church
P.O. Box 376
Joshua, TX 76058



ONLINE

Scan the QR code
to be directed to
Amplify formerly
Mogive

love grow serve

One Year Reading Plan

March

Day 60: Deuteronomy 26-27

Day 61: Deuteronomy 28-29

Day 62: Deuteronomy 30-32

Day 63: Deuteronomy 33-34

Day 64: Joshua 1-4

Day 65: Joshua 5-7

Day 66: Joshua 8-10

Day 67: Joshua 11-13

Day 68: Joshua 14-17

Day 69: Joshua 18-20

Day 70: Joshua 21-22

Day 71: Joshua 23-24

Day 72: Judges 1-3

Day 73: Judges 4-5

Day 74: Judges 6-8

Day 75: Judges 9-10

Day 76: Judges 11-13

Day 77: Judges 14-16

Day 78: Judges 17-19

Day 79: Judges 20-21

Day 80: Ruth 1-4

Day 81: 1 Samuel 1-3

Day 82: 1 Samuel 4-7

Day 83: 1 Samuel 8-12

Day 84: 1 Samuel 13-14

Day 85: 1 Samuel 15-16

Day 86: 1 Samuel 17-18

Day 87: 1 Samuel 19-21

Day 88: 1 Samuel 22-24

Day 89: 1 Samuel 25-27

Day 90: 1 Samuel 28-31

Joshua Methodist Church



love



grow



serve

Gospel of John - Word Search



ABIDE
BEGOTTEN
BELIEVE
BLINDNESS
BREAD
COMFORTER
DISCIPLE
DIVINE
ETERNAL
FEET

FISHERMEN
GLORY
HEALING
I AM
INCARNATION
JOHN
JUDAS
LAMB
LAZARUS
LIFE

LIGHT
LOGOS
LOVE
NATHANAE
NICODEMUS
REBIRTH
RESURRECTION
SAMARITAN
SENT
SIGNS

SPIRIT
TESTIMONY
THOMAS
TRUTH
VINE
WASHING
WATER
WAY
WINE
ZACCHAEUS

March 2025

Sunday Monday Tuesday Wednesday Thursday Friday Saturday

23	24	25	26	27	28	01 9-3 Stephen Ministry Training
02 4-6pm GriefShare	03 10-12 & 2-4 Helping Hands Pantry	04	05 NO Bible Study 11:30 LAB 5:00 Prayer 6:30 Ash Wed WNL following service	06 10-12 & 2-4 Helping H. Pantry 6:00 LAB 6:00 Mission Mtg	07	08
09 Stephen Minister Commission After Service: JMM 4-6pm GriefShare	10 10-12 & 2-4 Helping Hands Pantry	11 6:30 Council Meeting	12 10:00 Bible Study 5:00 Prayer 6:00 WNL	13 10-12 & 2-4 Helping Hands Pantry	14	15
16 After Service: Joshua Methodist Women 4-6pm GriefShare	17 10-12 & 2-4 Helping Hands Pantry	18 7:00 Choir practice	19 10:00 Bible Study 11:30 LAB 5:00 Prayer 6:00 WNL	20 10-12 & 2-4 Helping Hands Pantry 6:00 LAB	21	22 8:00-? Church- wide Workday
23 4-6pm GriefShare	24 10-12 & 2-4 Helping Hands Pantry	25	26 10:00 Bible Study 5:00 Prayer 6:00 WNL	27 10-12 & 2-4 Helping Hands Pantry	28	29
30 4-6pm GriefShare	31 10-12 & 2-4 Helping Hands Pantry	01	02 10:00 Bible Study 5:00 Prayer 6:00 WNL	03 10-12 & 2-4 Helping Hands Pantry	04	05

Notes :

Sunday Morning Activities:

7:30 am Morning Prayer

9:00 am Sunday School

10:30 am Worship Service

Notes

• • • • • • • • • • • • • • •
• • • • • • • • • • • • • • •
• • • • • • • • • • • • • • •
• • • • • • • • • • • • • • •
• • • • • • • • • • • • • • •
• • • • • • • • • • • • • • •
• • • • • • • • • • • • • • •
• • • • • • • • • • • • • • •
• • • • • • • • • • • • • • •
• • • • • • • • • • • • • • •
• • • • • • • • • • • • • • •
• • • • • • • • • • • • • • •
• • • • • • • • • • • • • • •
• • • • • • • • • • • • • • •

Church Council:

- Admin Chair - Jerome O'Loughlin
- Admin Council Secretary - Pat Browder
- At Large - Palmer Byerley, Angela Bradsher
- Chair - Congregational Care Ministry - Pat Bonds & BJ Denson
- Chair - Finance - Lucy Dowings
- Chair - Staff Parish Relations - Becky O'Loughlin
- Chair - Radical Hospitality - Marsha Tucker
- Chair - Risk Taking Missions & Service - Melia Mehlhorn
- Chair - Trustees - Roy McKenzie
- Lay Leader - Barbara Crew
- JMM - Don Collins
- JMW - Lucy Dowings

Please fill out the “FLAP” then fold and tear on the perforated line and drop in the offering plate.



The FLAP

Joshua Methodist Church



love



grow



serve

As committed Christian Disciples,
we **love** God
grow in Grace
and **serve** others



The FLAP 3/16/2025

We're so glad that you are here!
Please take a few minutes to fill out
this card and put in the offering plate.

NAME

PHONE

EMAIL

ADDRESS

Please select one

- Partner
- First-time Visitor
- Second-time Visitor
- Regular Attender

I would like to learn about (Check all that apply)

- Becoming a Partner
- Baptism
- Small Groups
- Serving Opportunities
- Joshua Methodist Ministries

I am in need of Prayer

Please fill out the “FLAP” then fold and tear on the perforated line and drop in the offering plate.



Or you can scan this **QR** code and fill out the form online.

