

Joshua Methodist Church



*love*



*grow*



*serve*

114 Paula Drive, Joshua, Texas

# Weekly Newsletter

**Jan. 28, 2024**



**Mark 6:1-6**

# Order of Worship

## 10:30 Service

### Apostles Creed

### Prelude

We Shall Behold Him

### Opening Song

Victory In Jesus (Red #119)

At Calvary (Red #579)

I Saw The Light

Awesome Is The Lord Most High

### Offering

### Offertory Song

Grace Greater Than Our Sin (Red #558)

### Doxology

### Children's Time

### Sermon

Always Seventeen in your Hometown

Mark 6: 1-6

### Pastoral Prayer

### Closing Song

All Hail King Jesus

### Mission Statement / Benediction

We are committed Christian disciples,  
loving God, growing in grace and serving others

*love*

*grow*

*serve*

**Today**

GriefShare®

## *Grief* Support Group

*Help and encouragement  
after the death of a loved one*

At a GriefShare group, you'll find understanding, guidance, relief, and a safe place to navigate the challenges of grief. Come join us!

Sundays, 4:00 - 6:00 p.m.  
January 14 - March 24

Joshua Methodist Church  
Presented by:  
Cheryl Pritchett, Pat Bonds & Terri Curry

[griefshare.org](http://griefshare.org)

Joshua Methodist Church



*love*



*grow*



*serve*

# This Week

## Health Tips in the Wesleyan Tradition

Heart Health, What you can do

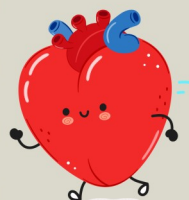
Get blood pressure checked as often as your health care provider suggests

Don't sit longer than 30 minutes. Get up & move for at least 3 minutes

Inflammation that's chronic can damage the heart. To reduce inflammation get regular aerobic exercise and lose weight

Ease stress by taking time to chill out. Go for a Walk

If you have had COVID, have your heart checked



Source: Prevention Magazine 2/24



ROMEO meets Wednesdays at 7AM  
at the Brunch House for  
breakfast & fellowship.  
Men & Women are welcome

## Men's Bible Study

FRIDAY, FEB. 2ND AT 7:00PM.  
WE WILL MEET IN FAITHBUILDERS.

WE WILL BE FINISHING 1ST JOHN  
PLEASE BRING YOUR BIBLE

love grow serve

# Helping Hands Pantry Needs



## Helping Hands Food Pantry

Fighting Hunger Together



Donation Requests

Please, no glass containers

Shampoo  
Soap  
Razors  
Toilet Paper



## This Week, cont'd

### Wednesday Bible Study Scarlet Thread

Pastor Payton's  
Bible Study is on Wednesdays,  
bright and early at 10:00 AM or  
in the evening at 6:00 PM,  
**cancelled for a  
Funeral Service**  
Hope you can join us.

Don't miss this amazing chance to grow  
in faith with your community!



Next Sunday

JOIN US TO SHOWER

*Dulce Acevedo*

IN HONOR OF HER NEW MARRIAGE WITH

*Eric Acevedo*

FEBRUARY

SUNDAY **4** 12:00-3:00

2024

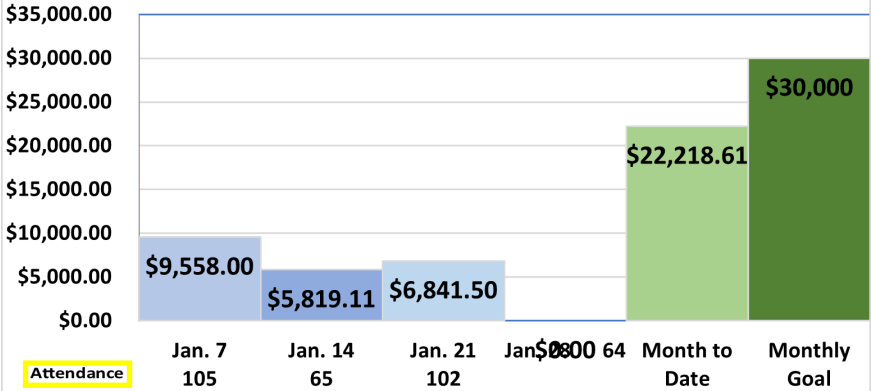
114 Paula St.  
Joshua, Tx 76058

Please RSVP to Hope  
*682-248-8393*

love grow serve

# This Week, cont'd

## January Operating Funds



**JOIN US FOR**



**Second Saturday**

**Community**

**OUTREACH**

Join us as we come together to reach out to our community with the life-changing love of Jesus

**February 10, 2024**  
**Time TBD**

*love*

*grow*

*serve*

**Joshua Methodist Church**



*love*



*grow*



*serve*



## WEEK SCHEDULE 1-28-2024

Sunday	
7:30am	Sunday Morning Prayer Meeting
9:00am	Sunday School
10:00-10:20am	Pre-Service Prayer (Children's Room, Ed. Building)
10:30am	Worship
4:00pm	GriefShare (Outreach Room)
Monday	
10:00am	Helping Hands Pantry (12:00pm)
2:00pm	Helping Hands Pantry (4:00pm)
Wednesday	
10:00am	Funeral Service
10:00am	No Bible Study
6:00pm	No Bible Study
Thursday	
10:00am	Helping Hands Pantry (12:00pm)
2:00pm	Helping Hands Pantry (4:00pm)
Friday	
7:00pm	Men's Bible Study in Faithbuilders Room

## WEEK SCHEDULE 2-4-2024

Sunday	
7:30am	Sunday Morning Prayer Meeting
9:00am	Sunday School
10:00-10:20	Pre-Service Prayer (Children's Room, Ed. Building)
10:30am	Worship
12:00pm	Bridal Shower for Dulce Noriega (Chedester Hall)
4:00pm	Grief Share (Chedester Hall)
Monday	
10:00am	Helping Hands Pantry (12:00pm)
2:00pm	Helping Hands Pantry (4:00pm)
Wednesday	
10:00am	Bible Study
6:00pm	Bible Study
Thursday	
10:00am	Helping Hands Pantry (12:00pm)
2:00pm	Helping Hands Pantry (4:00pm)
Friday	
6:00pm	Singles Group in Chedester Hall
Saturday	
TBD	Second Saturday Community Outreach

# Notes

---

---

---

---

---

---

---

---

---

---

---

---

---

---

---

---

---

---

---

---

---

---

---

---

---



**Joshua Methodist Church**  
[www.joshuamethodist.church](http://www.joshuamethodist.church)  
817-558-9801

**Senior Pastor**  
Payton Carter  
[Pastor@joshuamethodist.church](mailto:Pastor@joshuamethodist.church)  
**Operations Manager**  
Lynn Collins  
[Lynn@joshuamethodist.church](mailto:Lynn@joshuamethodist.church)

Please fill out the “FLAP” then fold and tear on the perforated line and drop in the offering plate.



# The FLAP

## Joshua Methodist Church



As committed Christian Disciples,  
we **love** God  
**grow** in Grace  
and **serve** others



# The FLAP

We're so glad that you are here!  
Please take a few minutes to fill out  
this card and put in the offering plate.

**NAME**

**PHONE**

**EMAIL**

**ADDRESS**

**CHECK ALL THAT APPLY**

- Member
- First-time Visitor
- Returning Visitor
- Interested in Membership
- Interested in Baptism

**1/28/2024**

Please fill out the "FLAP" then fold and tear on the perforated line and drop in the offering plate.

